

HearYourWay™



How to pair and stream a Made for iPhone and True Wireless™ device with a

Cochlear™ Nucleus® 7 Sound Processor

and compatible ReSound LiNX 3D™ and ReSound ENZO 3D™ hearing aid



Made for

iPod iPhone iPad

Hear now. And always



Made for iPhone pairing

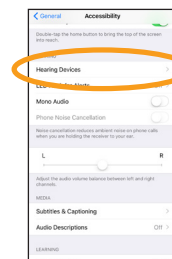
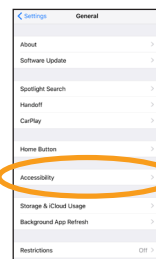
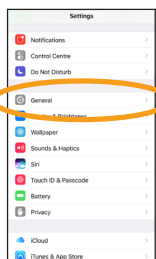
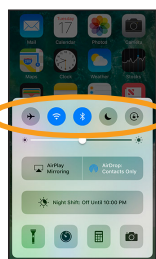
Bimodal use with a compatible hearing aid*

For the first time ever, you can stream sound from an Apple® device directly to both your Nucleus® 7 Sound Processor and compatible ReSound hearing aid, simultaneously. So you can enjoy music, phone calls and entertainment from your Apple device, in both ears.

Important: Your hearing devices must already be linked together by your clinician before you can pair them both together to your Apple device.

Pairing your sound processor and hearing aid to your compatible Apple device*

Follow the steps below to pair your sound processor and your hearing aid with your Apple device. For further instructions, see the Cochlear™ Nucleus 7 Sound Processor Pairing Guide or Connectivity guide for the ReSound Smart 3D™ app.



- 1 Turn off ReSound hearing aid and Cochlear Nucleus 7 Sound Processor.

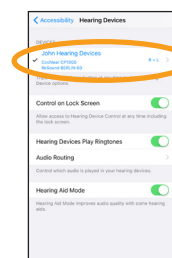
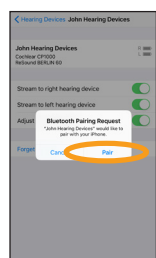
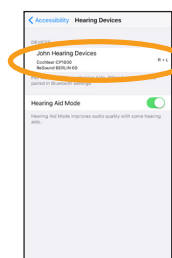
Note: Before bimodal pairing, ensure the hearing aid on the non-implanted side is correctly assigned to that ear via the hearing aid fitting software.

- 2 To pair your sound processor and hearing aid with your compatible Apple device, ensure Bluetooth® is enabled. Then, open the 'Settings' menu.

- 3 Select 'General'.

- 4 Select 'Accessibility'.

- 5 Scroll down and select 'Hearing Devices'.



- 6 Next, turn your sound processor and hearing aid on.

Your Apple device will then search for your hearing devices and display them in the 'Devices' section.

- 7 Select your name when it displays on the screen.

- 8 Select 'Pair' to confirm pairing. You will see this message twice and need to select 'Pair' each time.

- 9 When pairing starts:
- blue flash for 4 seconds
 - 6 beeps**
- Pairing may take up to 120 seconds.
- When pairing is finished:
- blue flash for 4 seconds
 - ripple tone**

Note: Don't start to stream audio until pairing is finished.

- 10 Your sound processor and hearing aid will both be listed under 'your hearing device name' and you should now be able to stream sound directly to both.

Pairing to more than one iPhone®, iPad® or iPod touch®


You can pair your sound processor and hearing aid with up to 5 compatible Apple devices, but you can only control them from one Apple device at any time. To manually change connection between devices you have previously paired to, turn off Bluetooth on the connected device, and turn on Bluetooth on the device you want to connect to. Your hearing devices will then automatically connect to the second device.

* For a list of compatible ReSound Hearing Aids visit www.cochlear.com/nucleus/compatibility

** Beeps are internal and only heard if device is on the head.


Cochlear™ True Wireless™ device pairing

Cochlear Wireless Mini Microphone

- 


1 Turn off ReSound hearing aid and Cochlear Nucleus 7 Sound Processor.
- 

2 Turn on Cochlear Wireless Mini Microphone 2/2+.

Note: Ensure Wireless Mini Microphone is charged.
- 

3 Press pairing button.*

**Press the pairing button once for channel 1, twice for channel 2, three times for channel 3.*

Note: The LED will blink orange for 20 seconds while device is in pairing mode.
- 

4 Next, turn your sound processor and hearing aid on.

Note: The LED will flash blue to show pairing was successful.

Cochlear Wireless TV Streamer

- 

1 Plug power and audio cables into Wireless TV Streamer and connect to audio source.
- 

2 Turn off ReSound hearing aid and Nucleus 7 Sound Processor.
- 

3 Press pairing button.

Note: The LED will blink orange for 20 seconds while device is in pairing mode.
- 

4 Next, turn your sound processor and hearing aid on.

Note: The LED will flash blue to show pairing was successful.

Cochlear True Wireless device streaming

Cochlear Wireless Mini Microphone and Wireless TV Streamer

- 

1 Turn on ReSound hearing aid then Nucleus 7 Sound Processor.
 - 

2 Turn on Cochlear Wireless Mini Microphone 2/2+ or Wireless TV Streamer.
 - 

3 Streaming to one or both hearing devices

Note: Streaming must be started and stopped on each device individually.
 - 

4 Streaming to both ears

Through Apple's accessibility menu you can control streaming to both the sound processor and hearing aid. Triple click the home button to access controls for turning on a streaming source and to adjust volume.
- 3a**



Nucleus 7 Sound Processor
Press and hold the button on your sound processor for two seconds, then release the button.

3b



ReSound Hearing Aid
Press and hold the push button on your ReSound hearing aid for three seconds.
- 

Cochlear CR310 Remote Control
Press and hold the Telecoil button for two seconds, then release.



ReSound Remote Control 2 (optional)
Press the streaming button on this remote control.

Hear now. And always

As the global leader in implantable hearing solutions, Cochlear is dedicated to bringing the gift of sound to people with moderate to profound hearing loss. We have helped over 450,000 people of all ages live full and active lives by reconnecting them with family, friends and community.

We aim to give our recipients the best lifelong hearing experience and access to innovative future technologies. For our professional partners, we offer the industry's largest clinical, research and support networks.

That's why more people choose Cochlear than any other hearing implant company.

©Cochlear Limited 2018. All rights reserved. Hear now. And always and other trademarks and registered trademarks are the property of Cochlear Limited or Cochlear Bone Anchored Solutions AB. The names of actual companies and products mentioned herein may be the trademarks of their respective owners.

Cochlear, Custom Sound, Hear now. And always, Kanso, Nucleus, True Wireless and the elliptical logo are either trademarks or registered trademarks of Cochlear Limited. ReSound, ReSound LiNX 3D, ReSound LiNX2, ReSound ENZO 3D, ReSound ENZO2 and ReSound Smart 3D are trademarks of GN Hearing A/S.

Apple, the Apple logo, Made for iPad logo, Made for iPhone logo, Made for iPod logo, iPhone, iPad Pro, iPad Air, iPad mini, iPad and iPod touch are trademarks of Apple Inc., registered in the U.S. and other countries. App Store is a service mark of Apple Inc., registered in the U.S. and other countries.

The Bluetooth® word mark and logos are registered trademarks owned by Bluetooth SIG, Inc. and any use of such marks by Cochlear is under license.

The Nucleus Smart App is compatible with iPhone 5 (or later) and iPod 6th generation devices (or later) running iOS 10.0 or later.

The Nucleus 7 Sound Processor is compatible with iPhone 8 Plus, iPhone 8, iPhone 7 Plus, iPhone 7, iPhone 6s Plus, iPhone 6s, iPhone 6 Plus, iPhone 6, iPhone SE, iPhone 5s, iPhone 5c, iPhone 5, iPad Pro (12.9-inch), iPad Pro (9.7-inch), iPad Air 2, iPad Air, iPad mini 4, iPad mini 3, iPad mini 2, iPad mini, iPad (4th generation) and iPod touch (6th generation) using iOS 10.0 or later.

ReSound LiNX 3D, ReSound LiNX2, ReSound ENZO 3D and ReSound ENZO2 are compatible with iPhone 8 Plus, iPhone 8, iPhone 7 Plus, iPhone 7, iPhone 6s Plus, iPhone 6s, iPhone 6 Plus, iPhone 6, iPhone SE, iPhone 5s, iPhone 5c, iPhone 5, iPad Pro (10.5-inch), iPad Pro (12.9-inch), iPad Pro (9.7-inch), iPad Air 2, iPad Air, iPad mini 4, iPad mini 3, iPad mini 2, iPad mini, iPad (5th generation), iPad (4th generation), iPod touch (6th generation) and iPod touch (5th generation) using iOS 8.0 or later.

Information accurate as of February, 2018

www.Cochlear.com/US/SmartBimodal

Cochlear is pleased to offer you professional support through our Smart Care line, please call 1-877-883-3101.

Cochlear and ReSound are partners in the Smart Hearing Alliance to develop the world's smartest bimodal hearing solutions



www.Cochlear.com/US

Cochlear Americas

13059 East Peakview Avenue
Centennial, CO 80111 USA
Telephone: 1 303 790 9010
Support: 1 800 483 3123

Follow us on   

Cochlear Canada Inc.

2500-120 Adelaide Street West
Toronto, ON M5H 1T1 Canada
Support: 1 800 483 3123



www.ReSoundPro.com

ReSound North America

8001 Bloomington Freeway
Bloomington, MN 55420
Telephone: 1 800 248 4327

ReSound Canada

303 Supertest Road
Toronto, Ontario M3J 2M4
Telephone: 1 888 737 6863



FUN2984 ISS2 FEB18