

# THE DIFFERENCE IS HERE

Now with access to 3.0T MRI with magnet removed and 1.5T with magnet in place\*



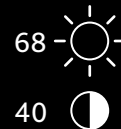
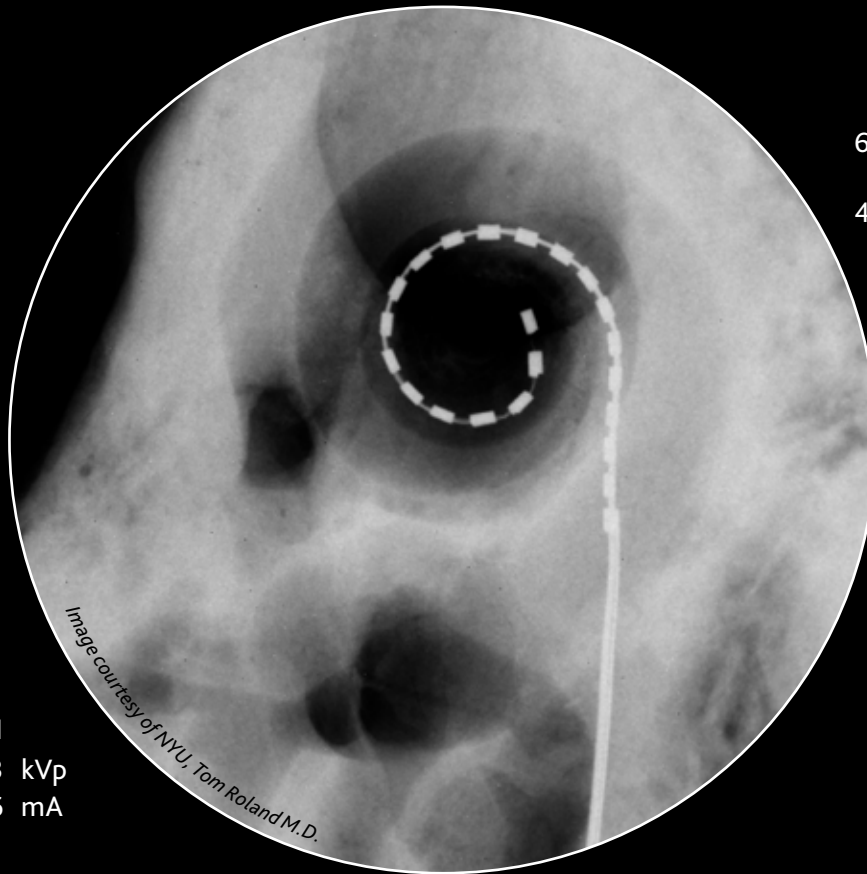
HEAR THE DIFFERENCE

SEE THE DIFFERENCE

FEEL THE DIFFERENCE

COCHLEAR™  
NUCLEUS® PROFILE  
WITH SLIM MODIOLAR  
ELECTRODE (CI532)

- 100% scala tympani placement<sup>1,2</sup>
- Closest to the spiral ganglion cells
- Optimal hearing performance<sup>3</sup>
- World's thinnest full length perimodiolar electrode with 60% less volume<sup>4</sup>
- Soft, flexible and atraumatic<sup>1</sup>
- Protects and preserves cochlear structures<sup>1</sup>
- Smooth and easy insertion
- RW, ERW or cochleostomy<sup>1,5</sup>
- Reloadable



∞ 1  
73 kVp  
3.36 mA

*Image courtesy of NYU, Tom Roland M.D.*



FUN1853 ISS1 JUL16 ©Cochlear Limited 2016. All rights reserved. Hear now. And always and other trademarks and registered trademarks are the property of Cochlear Limited.

References: **1.** Multi-center CI532 TB study - EA32 Electrode Insertion Safety and Performance Study Report (Windchill Reference 473386) **2.** Multi-center CI532 Slim Modiolar European clinical study, CLTD5446 (Windchill Reference 534341) **3.** Holden L, et al. Factors Affecting Open-Set Word Recognition in Adults, Ear Hear. 2013 May-Jun; 34(3):342-60. 2013 **4.** Data on file - Hi-Focus Mid-Scala Electrode brochure (028-M270-03) and Flex 24 - x-section (supports 'closest positioning to the hearing nerve'); Website: [http://www.vianna.de/01\\_workgroups/lenarz.html](http://www.vianna.de/01_workgroups/lenarz.html). (cited MAY 2 2016) **5.** Data on file - EMEA CI532 First Experience Protocol (FEP) 2015 (Windchill D806144)

\*With use of Cochlear supplied MRI Splint Kit. The following other implants are also approved: CI512, CI522, CI422, CI24REH, CI24RE(CA), and CI24RE(ST)